

www.gellifique.co.uk

GellifiQue[®]
PROFESSIONAL



NATURAL NAIL OVERLAY

Pro Care Hard Gel

Nail Prep

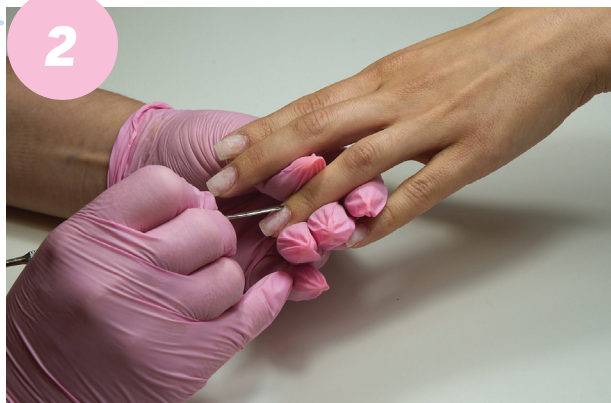


Natural Nail

- Following a product removal , prep the natural nail as you normally would.
- If this is not a re-balance service and the natural nail is completely smooth and product free, taking an 180 grit file gently buff the natural nail to remove shine and create a rougher surface.
- Remove any dust with a nail brush.

Cuticle Area

- Push back the cuticles with a cuticle pusher. Ensure the pusher is smooth around the edges and not too blunt to ensure maximum effect without having to apply pressure.
- Any skin tissue located right under the cuticle will cause product lifting.
- If you are e-file trained using a FLAME (blue or red) shaped cuticle bit, prep the cuticle area by lifting all the dead skin to be removed.
- Remove any dust with a brush.
- Remove any lifted, dry cuticles with cuticle nippers. Some clients may not require this step.



NATURAL NAIL OVERLAY



- Cleanse the nail with a specialised nail cleanser or a pure Isopropyl Alcohol Solution.
- The solution should have an alcohol content above 75% and no added emollients.
- It should have a cleansing and slightly dehydrating effect.

- Apply primer only to the natural nail and avoid applying it to any left over product.



- Wait 20 seconds for the nail primer to dry. A tacky layer will be left on the nail.



Base Layer

- Apply a scrub layer using any of the following products;
- The hard gel itself, Clarity Rubber Base, Rubber Base Medium or Microcrystal Base Coat.
- Remove excess product from the brush and apply a very thin coat.
- Cure for the recommended time depending on the product being used.
- Remove the tacky layer before applying slip layer of the hard gel.

GELLIFIQUE® PRO TIP

#1 A gel brush has slightly rougher bristles compared to a bottle brush. When working with hard gel you can decant a small amount of base and use a gel brush instead of the bottle brush to really scrub the product into the nail plate.

#2 Make sure to remove the tack from your scrub layer before applying slip layer of hard gel.

Strengthen The Free Edge



- Apply a small amount of product directly to the free edge.
- Use a fine liner brush such as 9 mm liner to spread the product from side to side, covering the entire free edge.
- Flash cure for 30 sec. in the Gellifique lamp.
- Ensure that the thumb is cured separately, placing it straight up without tilting.
- After all 5 fingers have been completed, cure the full hand again for 90 sec. in the Gellifique lamp.
- Now taking a 180 grit file and holding it at a 30

- degree angle **remove only the step** between the natural nail and strengthening layer.
- Avoid removing the product from the free edge.
- Now gently buff the rest of the free edge to remove the shine only.
- The result should be a unified surface between the natural nail and the overlay on the free edge.
- **The final step of the process will be completed after the Top Coat.**
- **This process should not take you more than 3 or 4 minutes of your time.**

Full Overlay

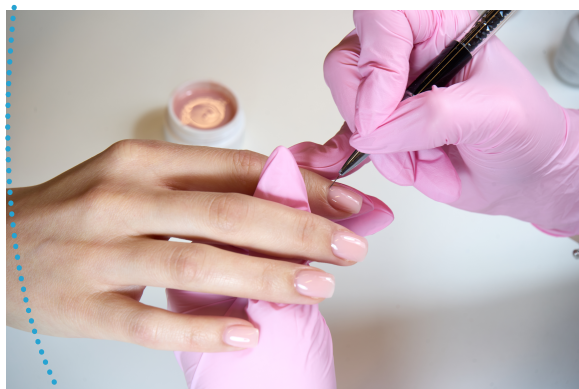


- Apply your slip layer of gel **leaving approximately 2 mm** between the product application and cuticle.
- Now, you can either go in with your bead application or in order to give yourself more time, flash cure the slip layer first for 30 sec. in the Gellifique lamp.

GELLIFIQUE® PRO TIP

The dispersive layer on the product after the cure will still allow you to complete the application as usual. The preliminary (optional) cure will stop the product from running into the sidewalls of the nail giving you plenty of time to perfect your application.

7



- Apply the product bead to the nail and with a thin liner brush distribute the product where required.
- 70% of the product should be on the apex to ensure it secures the stress zone. The rest of the product should be in equal quantities on the sides, cuticle area and free edge.

GELLIFIQUE® PRO TIP

8

When applying the bead if any product is placed where you don't need it, simply place the hand upside down for a few seconds to let the product go towards the apex.



- Once you are happy with the shape, cure for 90 sec. in the Gellifique lamp.
- To avoid losing the nail structure which you have created ensure the hand is placed into the lamp straight and the thumb is cured separately.

Top Coat and Free Edge Shaping



9

- Remove the tacky layer with a lint free wipe
- Apply top coat and cure 90 sec. in the Gellifique lamp.
- After the cure leave the Top coat to "cool down" for 30 sec.

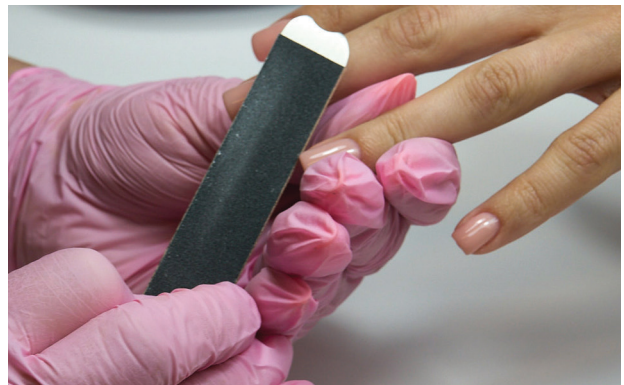
GELLIFIQUE® PRO TIP

Applying cuticle oil and cleansing the nail too soon sometimes can cause the top coat to loose its gloss faster. So let it "cool down" for 30 seconds before cleansing.

10 Typically *lifting from the free edge* can happen when the artificial product and natural nail are within one level with each other.

To avoid any lifting from the free edge we can remove the very tip of the natural nail.

- Taking a hand file with 100/180 grit and using the 100 grit side, place it at a 30 degree angle and remove the tip of the natural nail to very slightly shorten it.
- If working with an e - file use a CORN bit with green or red mark. Place the hand upside down and do the same as above.
- Apply cuticle oil or butter.



GellifiQue[®]
PROFESSIONAL

www.gellifique.co.uk