

A full application video is available on
our website at www.gellifique.co.uk

GellifiQue®
PROFESSIONAL



NATURAL NAIL OVERLAY

Apex Gel & Smart Colour Base

Nail Prep



1

Natural Nail

- Following a product removal , prep the natural nails as you normally would.
- If this is not a re-balance service and the natural nails are completely smooth and product free, taking a 180 grit file gently buff the natural nails to remove shine and create a rougher surface.
- Remove any dust with a nail brush.

Cuticle Area

- Push back the cuticles with a cuticle pusher. Ensure the pusher is smooth around the edges and not too blunt to ensure maximum effect without having to apply pressure.
- Any left over skin tissue located right under the cuticle will cause product lifting.
- If you are e-file trained using a FLAME (blue or red) shaped cuticle bit, prep the cuticle area by lifting all the dead skin to be removed.
- Remove any dust with a brush.
- Remove any lifted, dry cuticles with cuticle nippers. Some clients may not require this step.



2



NATURAL NAIL OVERLAY



- Cleanse the nail with a specialised nail cleanser or a pure Isopropyl Alcohol Solution. The solution should have an alcohol content above 75% and no added emollients. It should have a cleansing and slightly dehydrating effect.

- All primers should be applied with caution! Remove any excess product from the bristles. There should not be any chaotic movements around the nail plate and all contact with skin should be avoided!



- Wait 30 seconds for the nail primer to dry. A tacky layer will be left on the nail.



Base Layer

- Using the bottle brush or a gel brush apply a very thin coat of product.
- The goal in this step is to ensure the product has the maximum adhesion to the natural nail plate. A gel brush has slightly rougher bristles compared to a bottle brush and will assist you in doing that.
- Here you are not creating a perfect base layer but are trying to almost massage the product into the surface of the nail plate to ensure maximum adhesion.
- Cure for 30 sec. in the Gellifique lamp.

GELLIFIQUE® PRO TIP

One of the most common reasons for brush on builders lifting from the free edge is the condition of the natural nail itself or its length.

All brush on, strengthening products are more flexible than a true, hard builder gel.

This means that as the natural nail flexes (the thinner the natural - the more flexible it is) it can cause the product to lift from the free edge.

Here is an excellent technique on how to minimise the chances of this happening and ensuring the best possible product longevity.

Strengthen The Free Edge



5

- Apply a small amount of product directly to the free edge.
- Use a fine liner brush such as 9 mm liner to spread the product from side to side, covering the entire free edge.
- Flash cure for 30 sec. in the Gellifique lamp.
- Ensure that the thumb is cured separately, placing it straight up without tilting.
- After all 5 fingers have been completed, cure the full hand again for 90 sec. in the Gellifique lamp.
- Now taking a 180 grit file and holding it at a 30



6

- degree angle **remove only the step** between the natural nail and strengthening layer.
- Avoid removing the product from the free edge.
- Now gently buff the rest of the free edge to remove the shine only.
- The result should be a unified surface between the natural nail and the overlay on the free edge.
- **The final step of the process will be completed after the Top Coat.**
- **This process should not take more than 3 or 4 minutes of your time.**

Full Overlay



- Apply another thin coat of product with the brush from the bottle.
- Now, you can either go in with your bead application or in order to give yourself more time, cure the layer first for 30 sec. in the Gellifique lamp.

GELLIFIQUE® PRO TIP

The dispersive layer on the product after the cure will still allow you to complete the application as usual. But, the optional, preliminary cure will stop the product from running into the sidewalls of the nail giving you plenty time to perfect your application.

7



- Apply the product bead to the middle of the nail and with a thin liner brush distribute the product where required.
- 70% of the product should be on the apex to ensure it secures the stress zone. The rest of the product should be in equal quantities on the sides, cuticle area and free edge.

GELLIFIQUE® PRO TIP

When applying the bead if any product is placed where you don't need it, simply place the hand upside down for a few seconds to let the product go towards the apex.

8



- Once you are happy with the shape, cure for 90 sec. in the Gellifique lamp.
- To avoid losing the nail structure which you have "build", ensure the hand is placed into the lamp straight and the thumb is cured separately.

Top Coat and Free Edge Shaping

9



- Remove the tacky layer with a lint free wipe
- Apply top coat and cure 90 sec. in the Gellifique lamp.
- After the cure leave the Top coat to "cool down" for 30 sec.

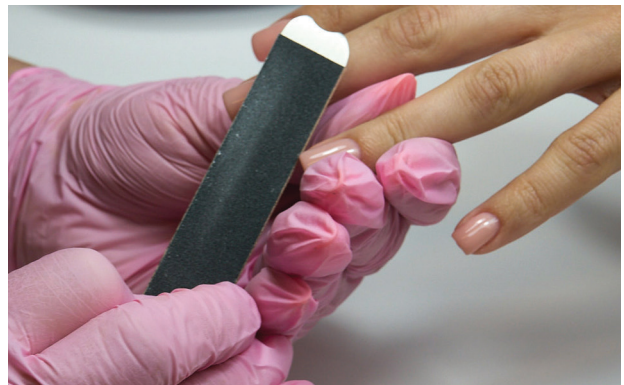
GELLIFIQUE® PRO TIP

Applying cuticle oil and cleansing the nail too soon sometimes can cause the top coat to loose its gloss faster. So let it "cool down" for 30 seconds.

10

To ensure better longevity of product from the free edge, we need to remove the very tip of the natural nail to shorten it very slightly. The goal is not to have both the product and the natural nail within one level of one another.

- Taking a hand file with 100/180 grit and using the 100 grit side, place it at a 30 degree angle and remove the tip of the natural nail to very slightly shorten it.
- If working with an e - file use a CORN bit with green or red mark. Place the hand upside down and do the same as above.
- Apply cuticle oil or butter.



GellifiQue[®]
PROFESSIONAL

www.gellifique.co.uk